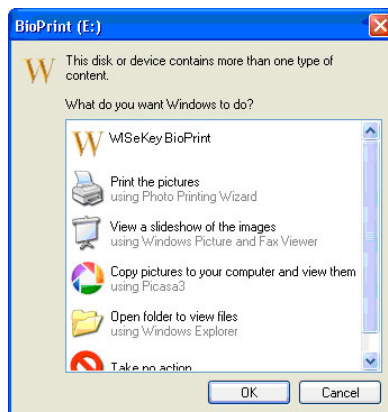


## WISeKey BioPrint Instructions

1. Plug the device into a USB port and wait for the Window's New Hardware Wizard to complete the installation of three devices (sub-functions of the Biometric USB device. No additional drivers are needed for Window 2000/XP/Vista products).
2. Click **No** on the System Setting Change Restart window. No new software is installed on the host PC. This message is a standard Windows response after the new hardware wizard completes.



3. The new storage hardware is now identified by Windows and you will be asked what you want to do with the files. If the WISeKey BioPrint item is selected as default application then click **ok**, otherwise select "Open folder to view files" and then double-click on **bioprint.exe** to start the BioPrint application.

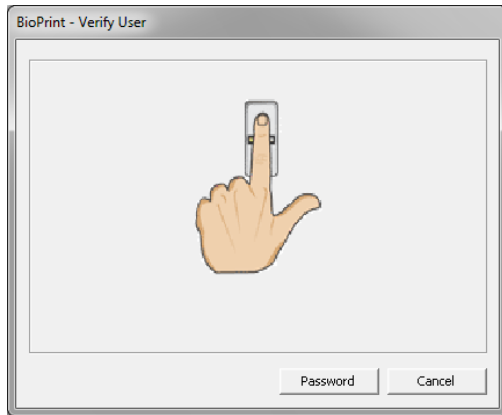


### 4. Initial Setup

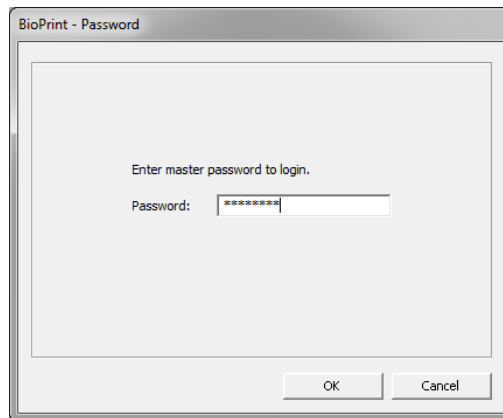
Your USB flash storage device uses two interchangeable security keys to lock the doors so that your files are protected. A text password and a biometric key that you have with you at all times even when you can't remember your text password. A swipe of your finger on the BioPrint® sensor is your new biometric key.

#### 4.1 Enroll your fingers

1. When BioPrint is started, the "Verify User" window is presented to the user to authenticate.



The first time you use the device, you must configure it with your fingerprint and password. Click on Password, and enter the initial password "11111111" then click on **ok**.

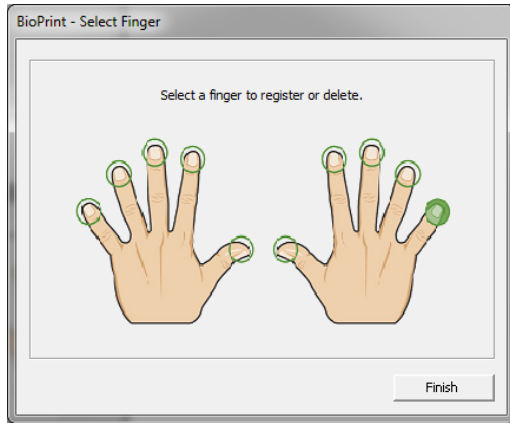


The BioPrint Menu will then be accessible from the taskbar (bottom right of the screen)



On the BioPrint menu click on **Register Finger**

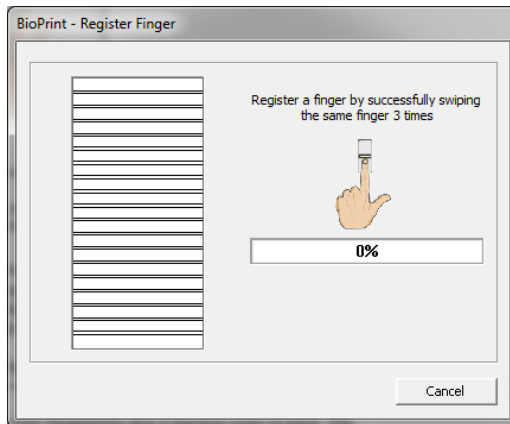
Select a new finger to enroll. The finger cannot be the finger that is already pre-configured by BioPrint.



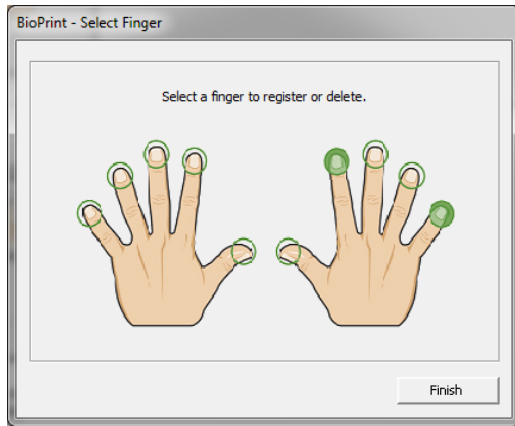
When you are asked to register your finger, swipe your finger 3 times as indicated in the registration window.

There are a few simple rules you must practice so that the BioPrint® sensor scans your fingerprint effectively.

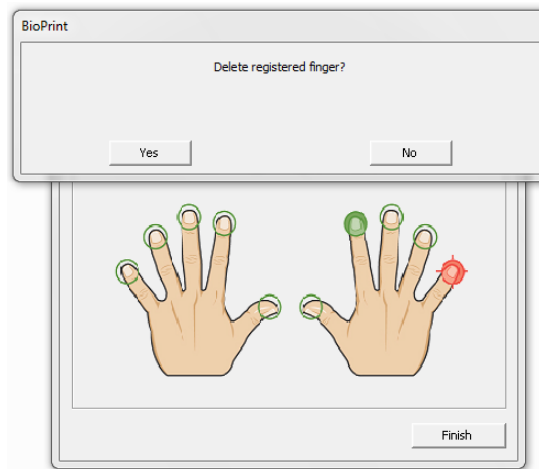
1. Lay your finger flat and firmly on the sensor before beginning the swipe.
2. Swipe at a constant speed so the motion is completed in one to two seconds. Try to maintain maximum surface contact between your finger and the sensor during the entire swipe.



As displayed in the window, your finger has been successfully registered.



You should now remove the pre-configured BioPrint finger by selecting it and clicking on Yes when you are asked to delete the registered finger.



### Hint

Store several of your own fingerprints and a backup copy of each. The training session uses three passes of each finger to perfect the stored image. This ensures you never have a problem. Save at least one fingerprint from each hand just in case the USB flash storage device is plugged into an obscure position. Don't worry about matching the exact finger with the finger selected from the displayed hands, because all fingers are interchangeable.

## 4.2 Change the Password

We strongly recommend that you also change the default password to a unique password that only you know. In order to change the default password, right-click on the BioPrint icon in the task bar and select **Change Password**. Follow the instructions on screen to change the token password.

### Secure Partition

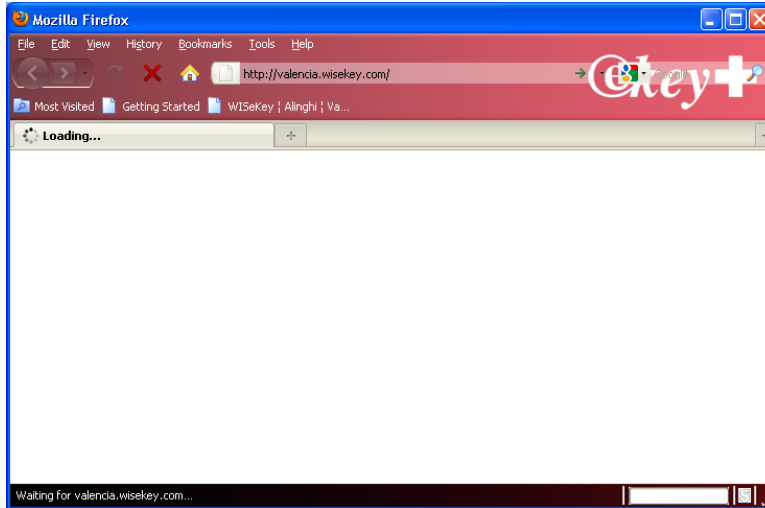
After you have entered your password and fingerprint keys, Your USB flash storage device is now set up and ready for use.

## 5. Secure Browsing

After authentication has been performed successfully, BioPrint will open the secure partition and then try to execute **Portable Firefox** from the private partition.

If Firefox does not start, you can double click on FirefoxPortable.exe from the FirefoxPortable folder. This folder is in your private partition.

When Firefox is launched you will be directed to the default web page.



## 6. Menu System

You might have noticed a new icon in your tool tray. This icon is the only way to access programs on your USB flash storage device. There are no permanently installed programs on your computer so there is no program to launch from the Start > All Programs menu. The technology is completely portable and does not leave any traces of data or programs anywhere on your computer.

**ICON left-click menu** – Opens a Start > Program window. This window will grow larger as you install portable applications on your USB flash storage device. You must use this launch menu because portable applications run entirely from the USB flash storage device. Do not look for USB portable applications in your standard Window's Start Program Menu.



- **Register Finger** -- starts the password manager. Here you can change your registered fingerprints or add USB flash drive access for other people. The finger positions are just suggestions and have no real connection to the actual finger used to generate the fingerprint key. If you

used your index finger to train for the first three fingers it will store three totally independent records of this single finger. This might help you get quicker fingerprint recognition if that is important to you.

- **Secure File** – is a way to encrypt a file in place on the PC regular hard drive. If you want to secure a document on a PC shared by several workers and leave the file on the PC than this is one solution. Just remember you must have your USB flash storage device to unlock the encrypted file.
- **Web Links** – allows you to securely carry web login IDs and passwords with you in the convenient USB drive package.
- **Help** – opens this help file system. For third party portable application refer to the help system built within the application.

**ICON right-click** – Opens a setup window which includes a sign-out button.

- **Change Password** – Changes the standard text password without affecting the fingerprint keys
- **Set Language** – Choose a different language for the menu items
- **Training tool** – Lets you practice your finger-swiping technique
- **Sign out** – Makes the secure data inaccessible until you sign back in.
- **About** – Displays the current firmware version number and website for updates.
- **Exit** – Shuts down the USB flash storage device and prepares it for unplugging from your PC