



Setup for Outlook Express (English)

Date: 15 July 2009
Document: Manual Outlook Express English V 1.1.doc
Authors: WIS@Key SA

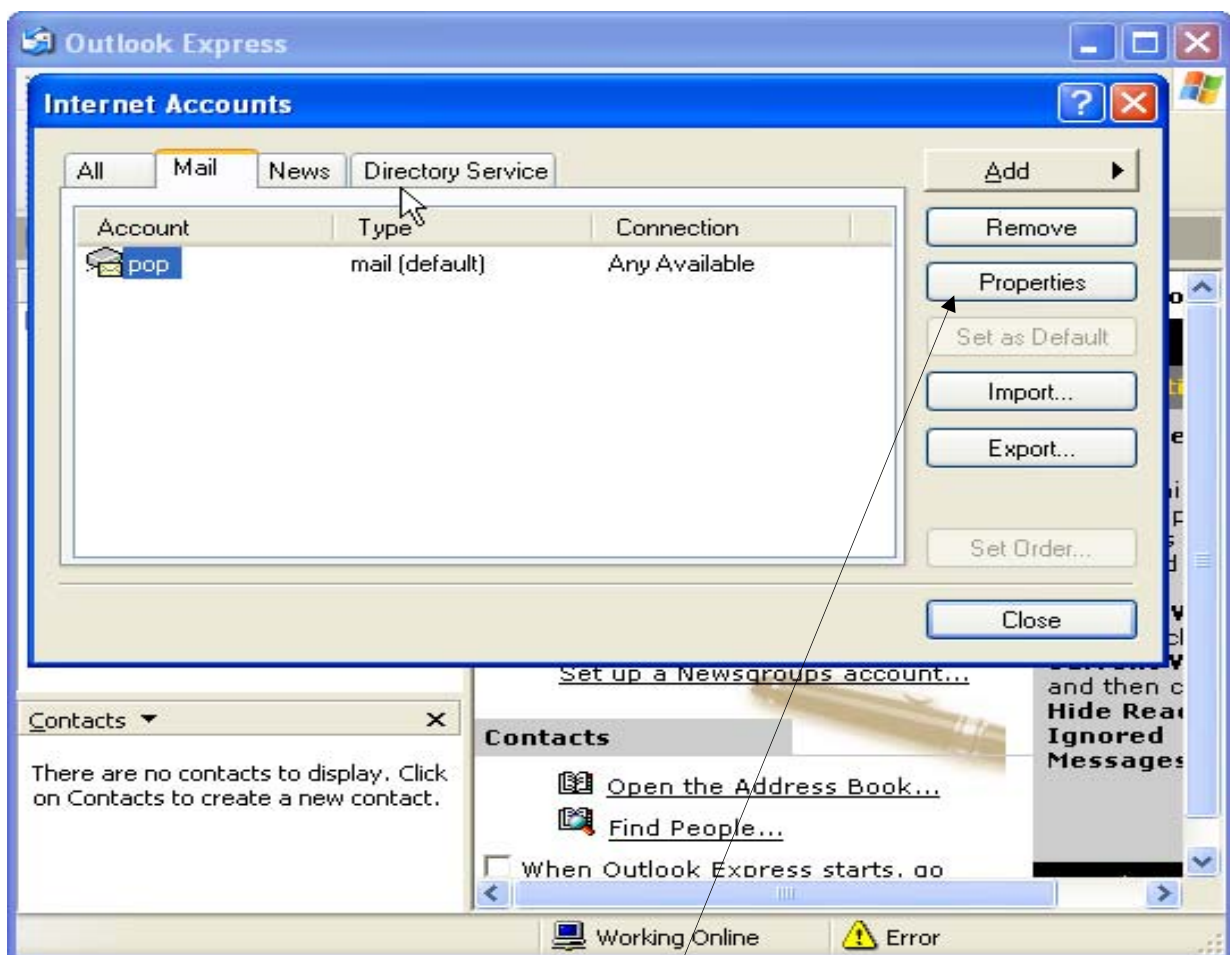
TABLE OF CONTENTS

Installing and Using your Secure Email Certificate with Outlook Express 5 & 6..... 3
 Assigning your Certificate to your email account:..... 3
 Signing an Email:..... 5
 Signing process 6

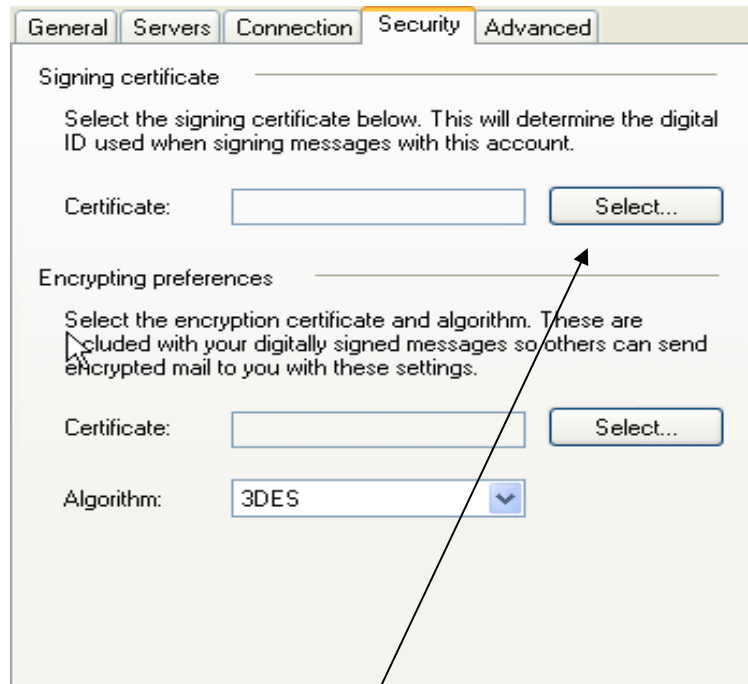
INSTALLING AND USING YOUR SECURE EMAIL CERTIFICATE WITH OUTLOOK EXPRESS 5 & 6

ASSIGNING YOUR CERTIFICATE TO YOUR EMAIL ACCOUNT:

1. Open Outlook Express
2. Select **Tools** from menu
3. Select **Accounts** from drop down menu
4. In dialog box that appears select **Mail** then select your relevant email account
5. Click **Properties**
6. Click the **Security** tab
7. Click **Select Signing Cert.** From the popup Certificate store box locate and select your Secure Email Certificate.
8. Click **OK** to return to Outlook Express



Click Properties

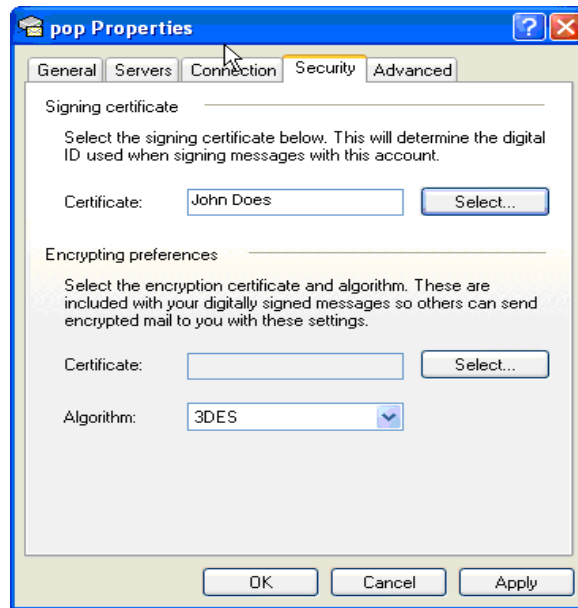


Click Select



Click Ok

Notes: If you don't have any certificate in the window, please go to FAQ on WISeKey website's.



Click Ok

SIGNING AN EMAIL:

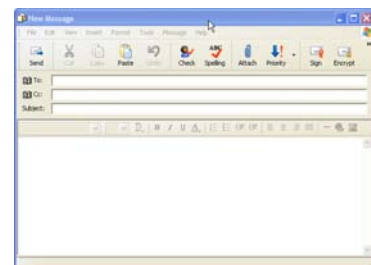
Signing an email ensures the recipient knows the email has come from you and informs the recipient if it has been tampered with since being signed.

1. Compose your email and attach files as usual

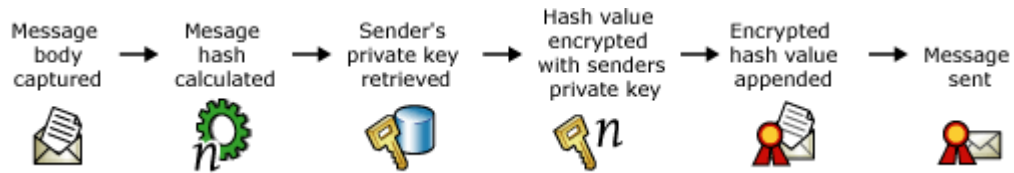
2. Click **Sign** button



3. Click **Send** button



SIGNING PROCESS



Warning: the encryption function has deliberately not been used and this is not integrated into the digital certificate used.