



Setup for Apple Mail (English)

Date: 15 July 2009

Document: Manual AppleMail-Athena_Setup_macosx en.doc

Authors: WIS@key SA

TABLE OF CONTENTS

1. Introduction 3

2. Install the Drivers Smartcard Reader (SCR3310) 4

 Athena Card Drivers..... 7

 Signing Email in Apple Mail..... 8

 Signinig process 9

Using Athena Cards with OS X 10.5 and Apple Mail

Setup & User Guide

1. INTRODUCTION

This document will describe the step by step process to use Athena SmartCards with Apple Mail on OS X 10.5 (Leopard).

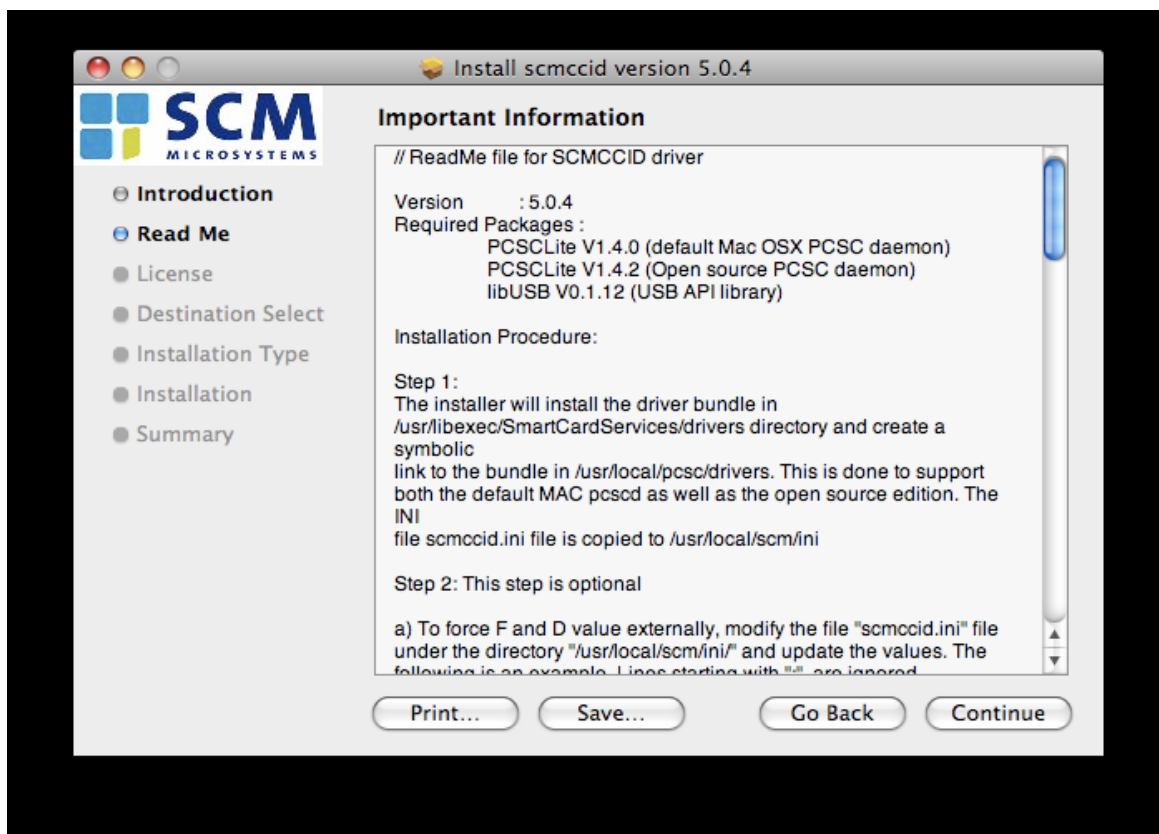
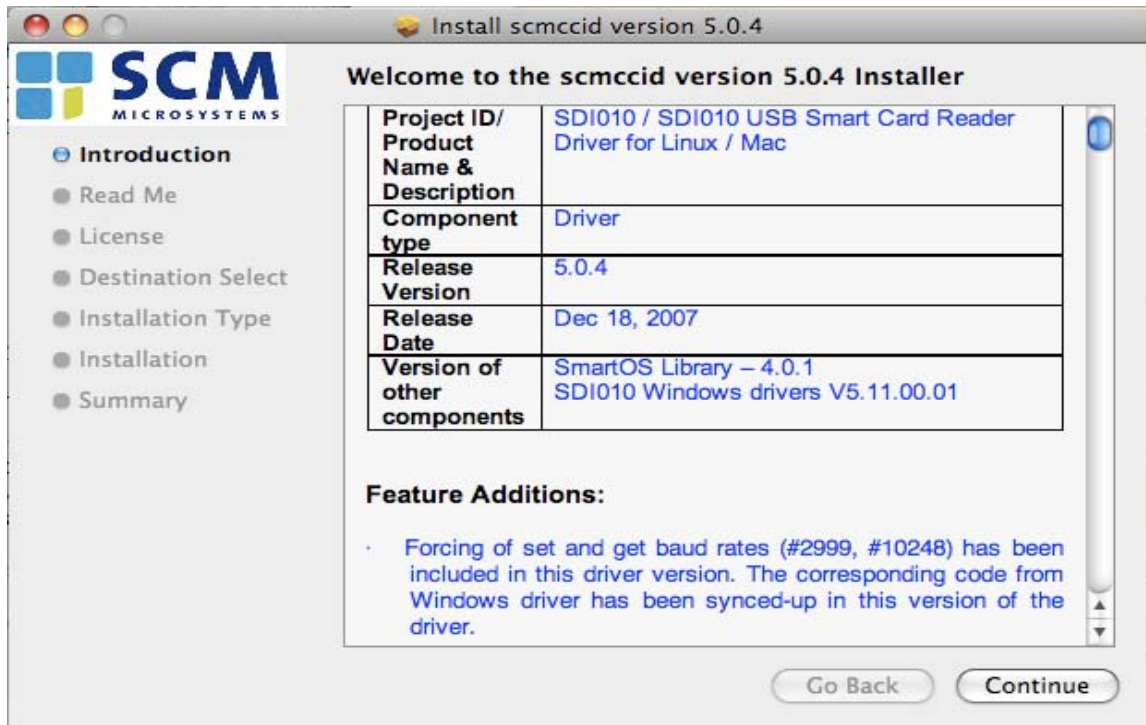
If contains of the following steps:

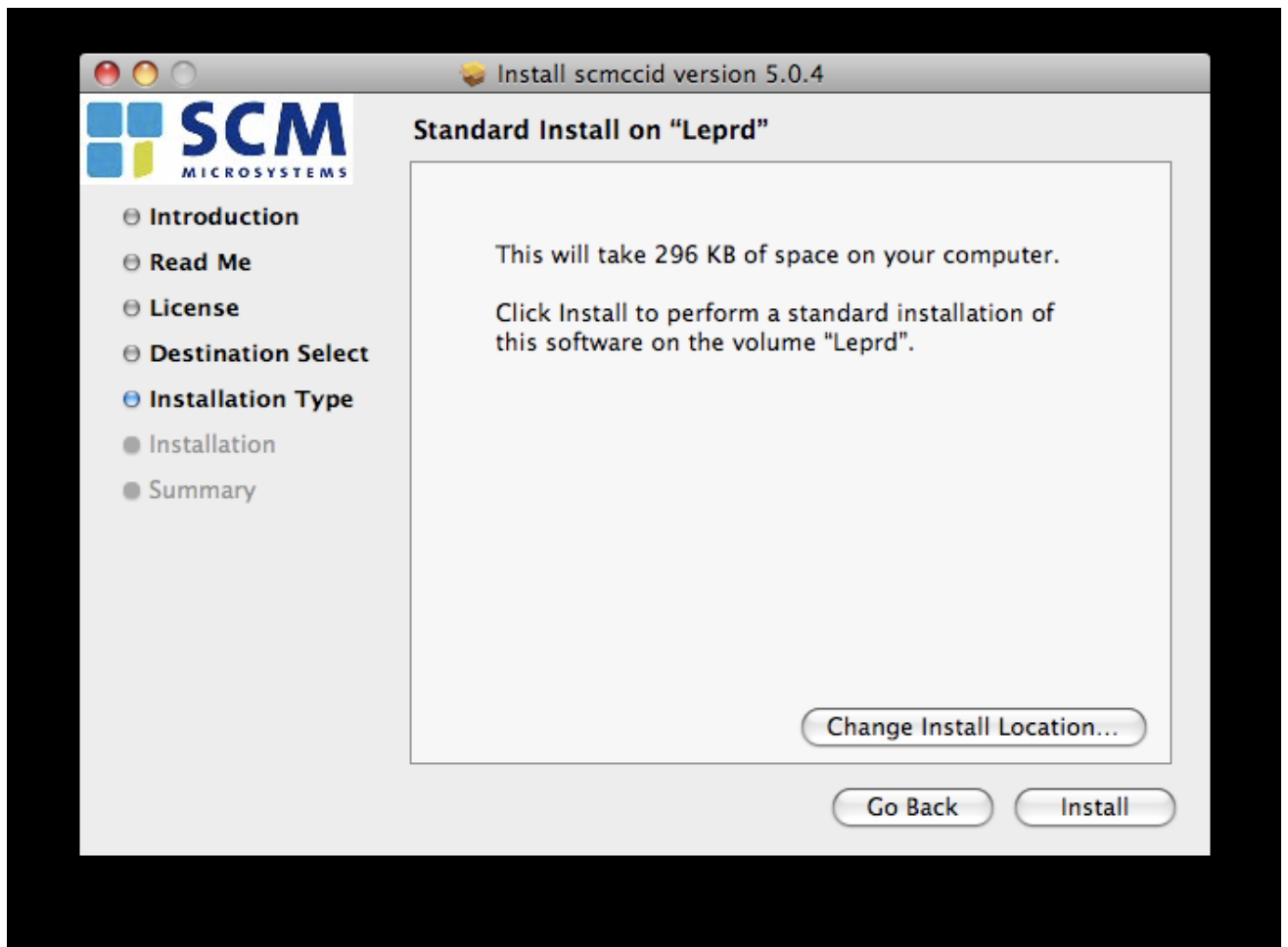
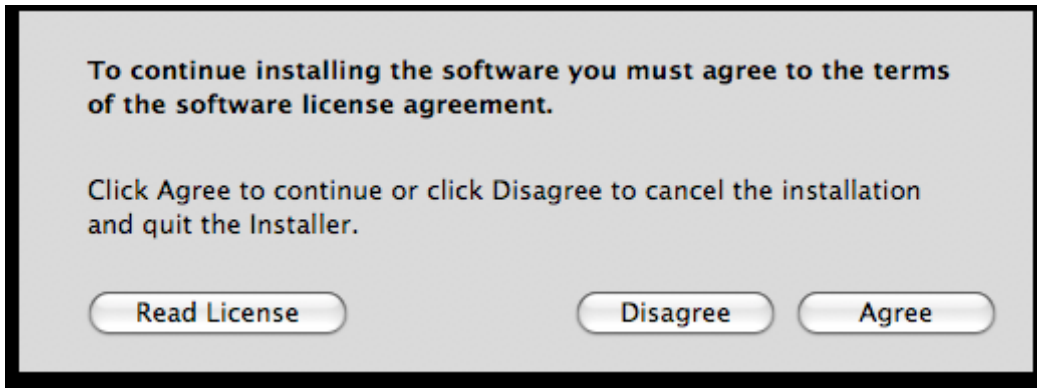
- Installing drivers for smartcard reader
- Installing driver for smartcards
- How to use a certificate in Apple Mail

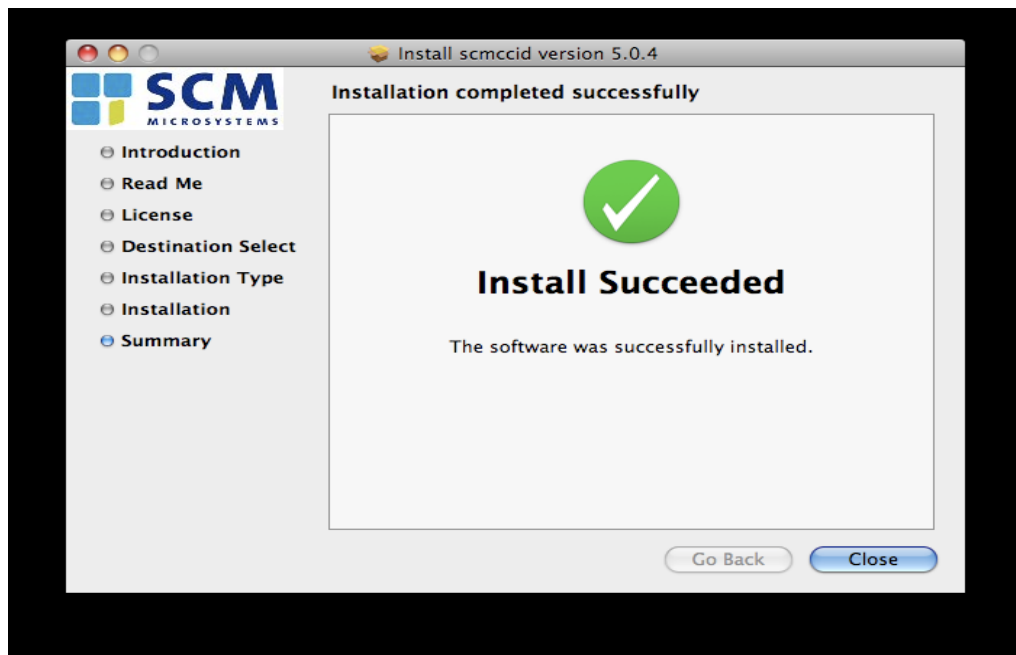
First please make sure you obtain the correct drivers. You will need the following packages:

1. Driver For Reader (SCR3310): scr3310_-_macos_x__driver.zip
2. Driver for SmartCards: Athena SCS MacOS.zip

2. INSTALL THE DRIVERS SMARTCARD READER (SCR3310)







Your Reader is now successfully installed.

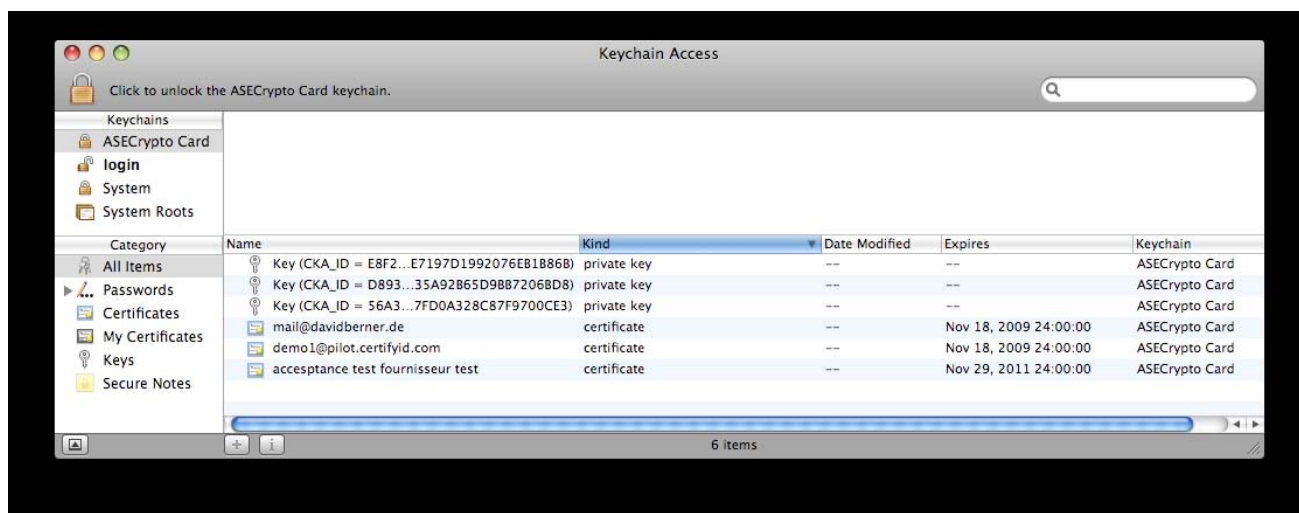
ATHENA CARD DRIVERS

Please unpack the file Athena SCS MacOS.zip, and look for the file ASECryptoMac_Leopard.dmg.zip.

Unpack this one, then open the DMG file (depending on your configuration it may open automatically). Inside the DMG file you will find the file asecrypto-mac.tar.gz and a file readme.txt, where you find these instructions:

1. please open Terminal.app (Applications/Utilities) and type the words inside double quotation marks "sudo tar xvfzP "
2. Drag & drop asecrypto-mac.tar.gz file into the Terminal window
3. Hit 'return' key You'll be asked for administrator password.
4. Quit Terminal.app. Now your Athena Card drivers are successfully installed. If you have your athena card, please insert it into your reader (after plugging the reader into you USB port). The LED on the reader should light up.

Optional: To verify that the card is properly recognized, you can open Keychain.app (Applications/Utilities), there your card should appear in the upper left corner.



When selecting the card, if it contains already a certificate it will be displayed below (see figure).

SIGNING EMAIL IN APPLE MAIL

In order to sign emails using the certificate on your smartcard, you need to insert the smartcard BEFORE opening Apple Mail.

Then once you compose a new email from an account whose address corresponds to the email address of your certificate, there is a field that appears on the right hand side (see highlighted region in the figure below).

By default any outgoing message will be signed, so there is no additional action required. If you wish to not sign an outgoing message, please click on the checkmark symbol, it will deactivate the signature.

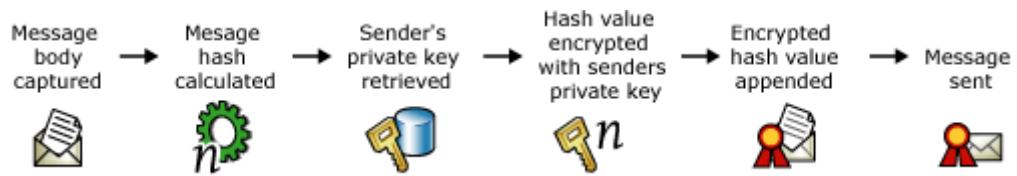
When you send your email, you will be prompted with a dialog to confirm your password. Once you enter the correct password of your token and confirm, the email will be signed and sent.



When you send your email, you will be prompted with a dialog to confirm your password. Once you enter the correct password of your token and confirm, the email will be signed and sent.



SIGNING PROCESS



Warning: the encryption function has deliberately not been used and this is not integrated into the digital certificate used.